



Department of Transportation & Public Facilities Alaska Marine Highway System

Southeast Conference

Captain Michael Neussl, DOT&PF Deputy Commissioner, Marine Operations

September 26, 2012



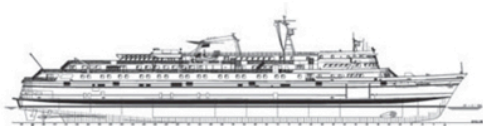
Agenda

- Alaska Marine Highway System Traffic and Revenue Update
- AMHS Scheduling
- AMHS Communications
- AMHS Project Updates
- Questions

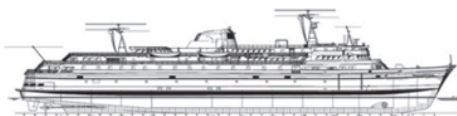




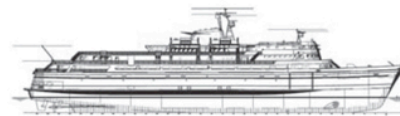
Fleet Profile



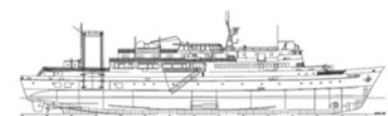
MV Matanuska
408 feet
Built 1963



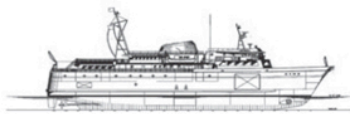
MV Malaspina
408 feet
Built 1963



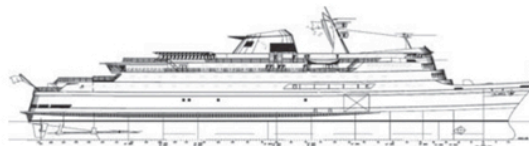
MV Taku
352 feet
Built 1963



MV Tustumena
296 feet
Built 1964



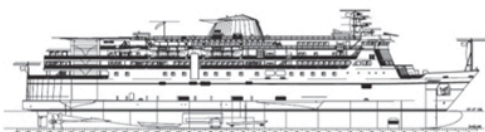
MV LeConte
235 feet
Built 1974



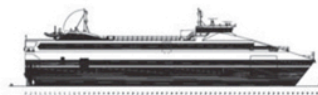
MV Columbia
418 feet
Built 1974



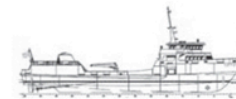
MV Aurora
235 feet
Built 1977



MV Kennicott
382 feet
Built 1998



FVF Fairweather
235 feet
Built 2004



MV Lituya
181 feet
Built 2004



FVF Chenega
235 feet
Built 2005



Passenger and Vehicle Traffic

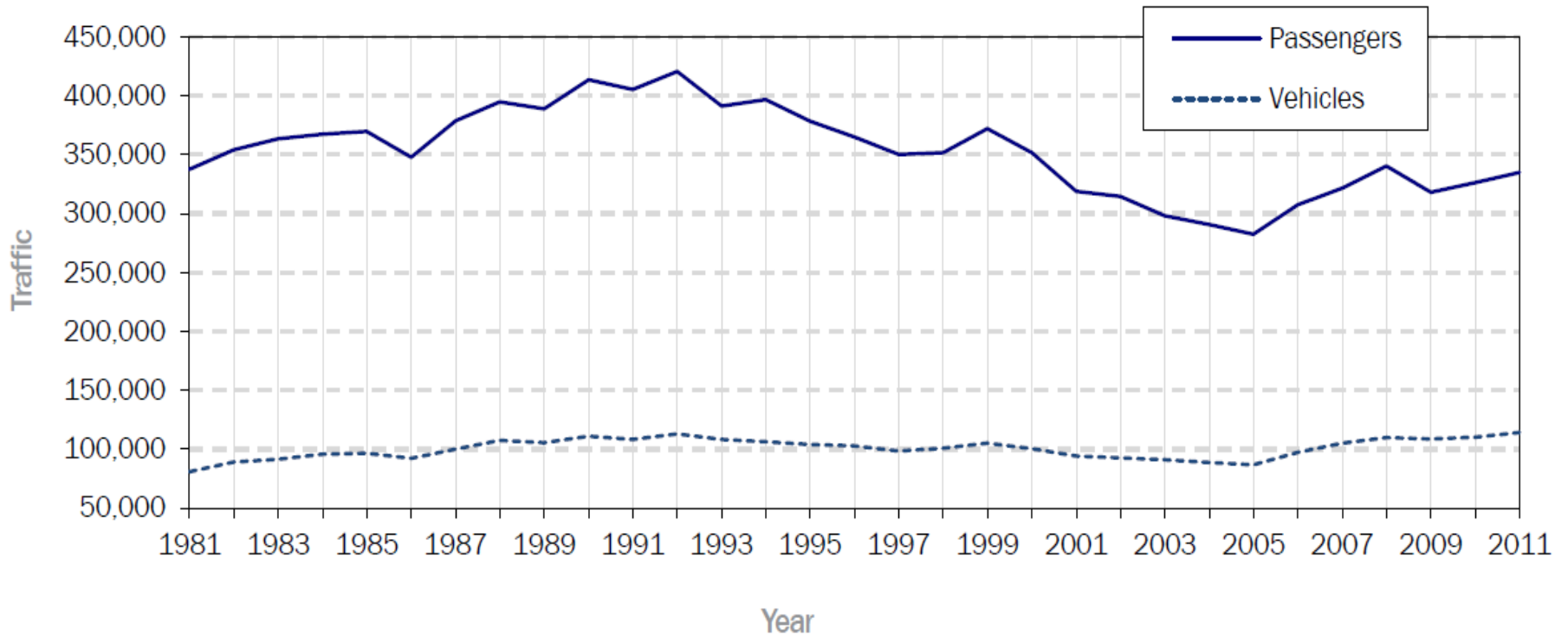
- CY 2011 Traffic Volume System Wide
 - 334,778 Passengers – Up 2.59%
 - 114,100 Vehicles – Up 3.65%
 - All time record number of vehicles!
- CY 2011 Traffic Volume Southeast Only
 - 253,554 Passengers – Up 0.81%
 - 81,118 Vehicles – Up 1.72%





Traffic Trends

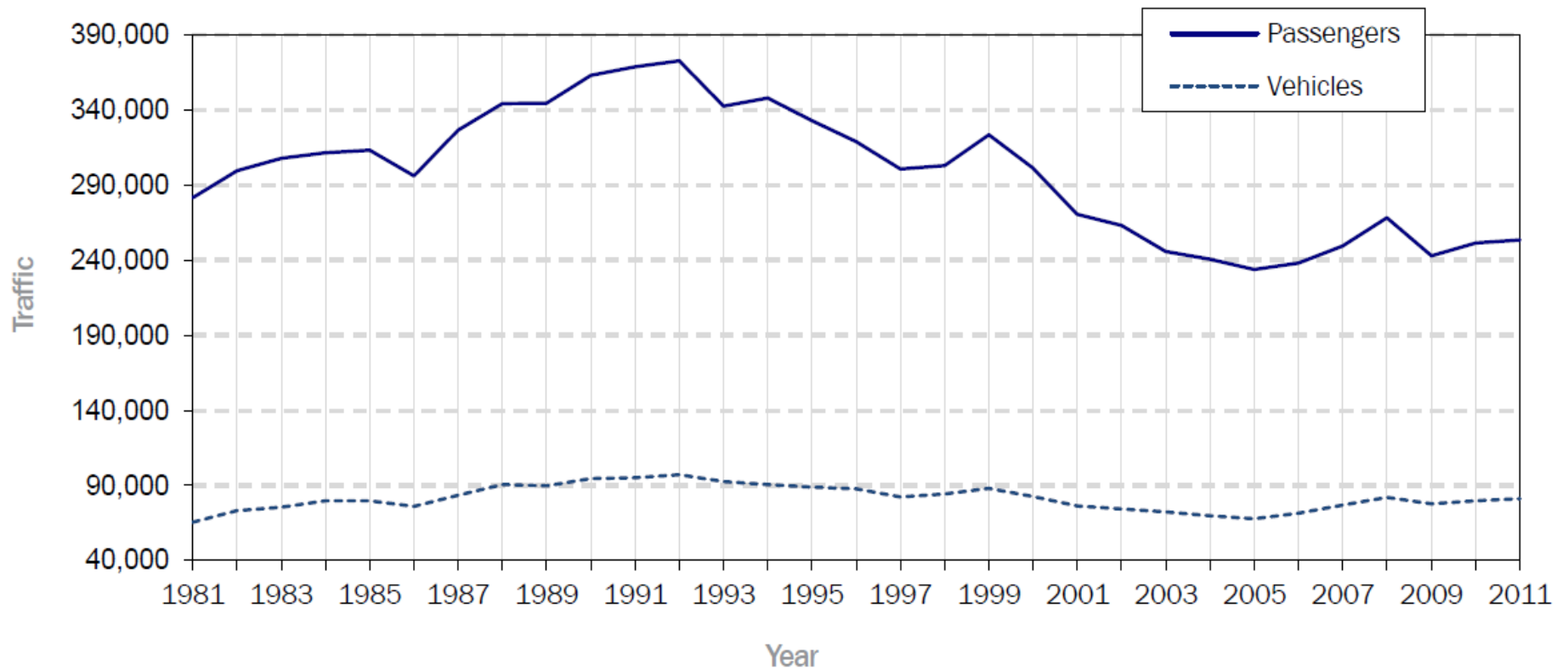
Annual Traffic Chart





Traffic Trends

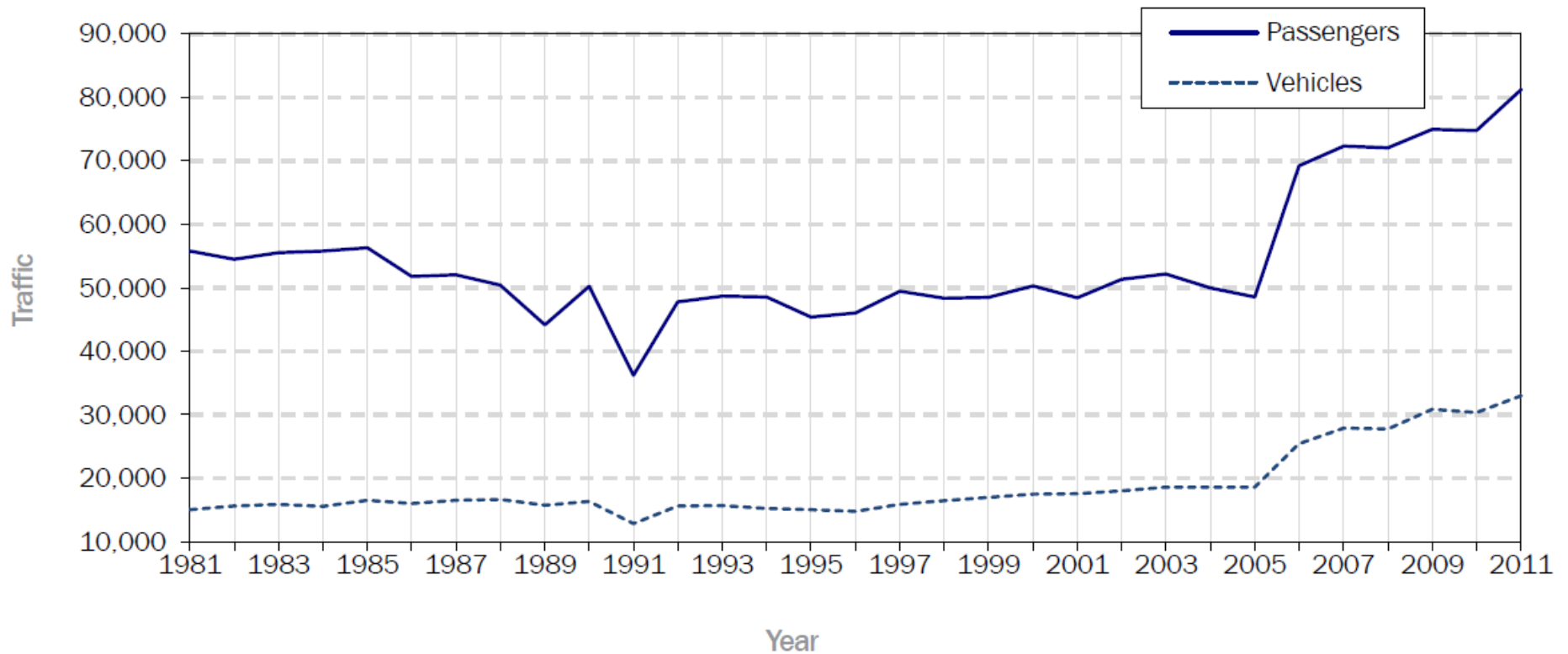
Annual Southeast Traffic Chart





Traffic Trends

Annual Southwest Traffic Chart





Financial Update

	FY10 Actual	FY11 Actual	FY12 Actual
Operating Expenses:	\$140,261.0	\$158,700.0	\$171,436.0
Total Revenues:	\$47,002.0	\$47,700.0	\$52,183.0
Cost Recovery Percentage	33.5%	30.1%	30.4%

In thousands (000)

FY 2012 set an all time record for revenue generation



Scheduling

- Summer 2013 Schedule Highlights
 - Continue Malaspina homeport change (from Skagway to Juneau)
 - “Fix” Northern Lynn Canal Day Boat Service (6x per week)
 - Fairweather serves Angoon and Sitka – but with alternating directions
 - Fairweather continues once per week Petersburg service
 - Hoonah, Angoon, and Pelican overnights for LeConte
 - More direct service for Hoonah and Gustavus
 - Continuation of Bellingham to Whittier express run
 - Continue twice per month Aleutian chain service in summer
- Early schedule release for reservations



Communications

- Our Goal is Simple
 - Keep customers informed
- AMHS Website:
 - www.FerryAlaska.com
 - Live Vessel Tracking
 - All 11 Ships
 - Headlines
 - Schedule Updates
- GovDelivery
- Press Releases
- 511
- Central Reservations
- Local Terminals

State of Alaska myAlaska My Government Resident Business in Alaska Visiting Alaska State Employees

Alaska Department of Transportation & Public Facilities
Alaska Marine Highway System

DOT&PF > FerryAlaska.com

Home Plan a Trip Reservations Specials Travel Details Explore Alaska About Us News & Updates Vessel Tracking

Request a Schedule or DVD
 Simply fill out the [request form](#) to receive a complimentary copy of our printed schedule, or your FREE Alaska Marine Highway System dvd.

Watch Our Videos
 Learn more about traveling the Alaska Marine Highway. Take a [virtual trip](#) along the inside passage, or get details about bringing your pet.

Sign Up for Sea News
 Our monthly email newsletter subscribers receive exclusive advance notice on travel specials, community events and the latest AMHS news!

50TH ANNIVERSARY!

The Alaska Marine Highway is celebrating 50 years of service in 2013. To kick off the celebration, we're unveiling a new logo that will commemorate the 50th anniversary.

The new logo shows an Alaska Marine Highway vessel with a 50-year celebratory ribbon. The shape is inspired by portholes of oceangoing vessels. The colors represent the deep blue ocean and white capped waves of Alaska's waters.

The logo is just the start - there will be other new events and information as we begin celebrating our golden anniversary!

Find a Sailing

DEPARTS ARRIVES
 Leaving From Going To
 DEPARTURE DATE
 mm/dd/yyyy Search

Headlines

- Kennicott to Supplement Chenega Passengers Monday, September 10
- AMHS Unveils New Logo to Celebrate 50 Years of Service
- Check out our new Community Events page, now featuring events for September & October

Schedule Update

Connect With Us On Facebook!



Projects

- Prince Rupert Lease and Dock
- Annette Bay Terminal
- Alaska Class Ferry
- FVF Repower and Litigation
- New Reservation System
- Columbia Repower





Projects (continued)

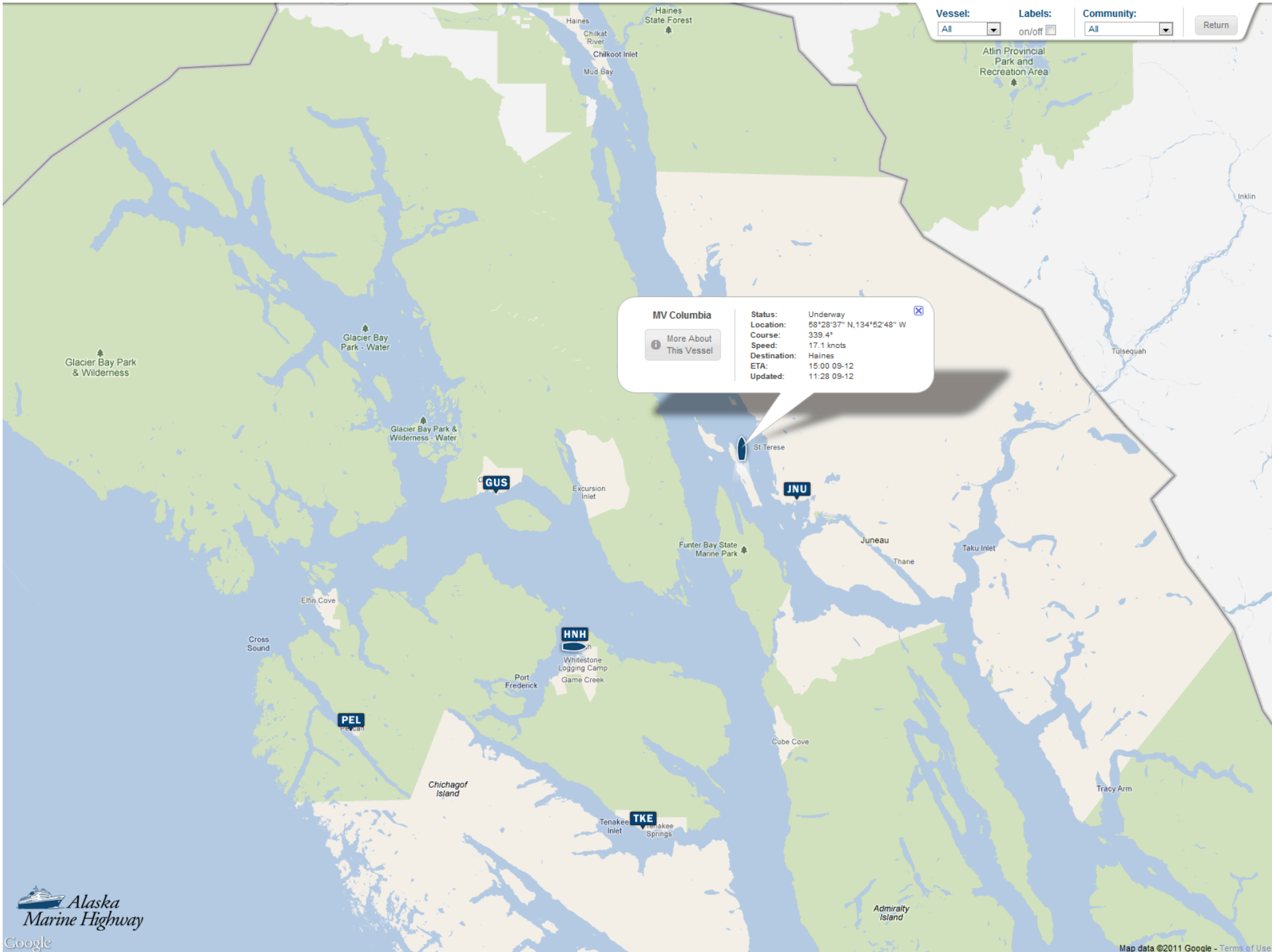
- Federal Funding – MAP-21
 - Pax 20%, Veh 45%, Miles 35%
- New AMHS service
 - Ouzinkie, Old Harbor
- Regulation Revision 17 AAC 70
- Animal Transport Policy
- Ward Cove Project
- AMHS 50th Anniversary





Questions?







AMHS Messaging

- AMHS serves all of Alaska
- Marine Transportation Advisory Board (MTAB) and its 11 members exist as public conduit into AMHS
- GovDelivery Method of Communications for MTAB and AMHS



Alaska Department of Transportation & Public Facilities

 search

DOT&PF State of Alaska

- Home
- Travel Info
- Doing Business w/Us
- Divisions/Sections
- Employment
- Public Notices
- Employee Directory



Aviation



Highways



Ferries



Design & Engineering



Transit



Measures & Commercial Vehicles



Safety



Ports & Harbors



Marc A. Luiken
COMMISSIONER

Our mission is to "Get Alaska Moving through service and infrastructure."



Alaska DOT&PF Economic Stimulus



Receive News, Updates & More by Email & Text



Traveler Information



Alaska DOT&PF Performance Dashboard



[Accessibility](#) [Title VI Nondiscrimination](#) [Terms of Use](#) [Copyright Info](#) [DOT&PF Employee Directory](#) [Links for DOT&PF Staff](#)



Headlines

- » **NEW** August 26: Paving Delay Affects Kotzebue Airport
- » **NEW** August 26: Expanding Business Top Priority for 2nd Air Cargo Summit
- » **NEW** August 25: ADOT&PF Releases 2010 Annual Report; Publication provides a glimpse into the department's mission
- » August 23: NASA Collaborates on Cargo Airship Workshop in Alaska
- » August 22: Fairweather Sailings Canceled, Repair Underway
- » August 20: Alaska DOT&PF Closing the Copper River Highway
- » Aug. 17: Alaska Marine Highway System Launches Redesigned Website featuring Real-Time Vessel Tracking
- » Press Release Archive

Highlights

- » ASK DOT&PF!
- » **NEW** 2010 Department Overview
- » *The DOT&PF website is under redesign, so you may notice some temporary layout differences. Contact the webmaster with questions. Thanks for your patience.*
- » Employee Spotlight: Recognizing our outstanding DOT&PF employees

How Do I...

- » Make a ferry reservation on the Alaska Marine Highway?
- » Find a Scenic Byway?
- » Find a job with the DOT&PF?
- » Get an Alaska Highway Map?
- » Participate in the Adopt-A-Highway program?
- » Report a Traffic Crash?
- » Contact the Division of Motor Vehicles?
- » Find road weather information?
- » Apply for a Right of Way permit?
- » Lease space at a Rural Airport?

Quick Links

- » Find a DOT&PF employee
- » Key Department Contacts
- » Regions
- » Frequently Asked Questions
- » 2010-2013 STIP
- » Procurement
- » Public Notices
- » Alaska Railroad
- » Other State DOTs
- » US DOT
- » Alaska Region FAA
- » FHWA
- » FTA
- » Government Links

Project Information

- » **Project Reporting** - Status of Active Statewide Projects
- » Other Project Information
 - » Statewide Projects
 - » Central Region
 - » Northern Region
 - » Southeast Region

Above Photo Banner: Kalifornsky Beach Road, Pedestrian Pathway project near Kenai. Photo by Jonathon Tague, Alaska DOT&PF

Department of Transportation & Public Facilities
PO Box 112500
3132 Channel Drive
Juneau, Alaska 99811-2500
Phone: 907-485-3900 || 907-586-8365 (FAX)



NOTIFICATION

ALASKA DEPARTMENT OF
TRANSPORTATION & PUBLIC FACILITIES



Email Updates

To sign up for updates or to access your subscriber preferences, please enter your contact information below.

Subscription Type

Email Address *

Your contact information is used to deliver requested updates or to access your subscriber preferences.

[Privacy Policy](#) - [Help](#)



NOTIFICATION

ALASKA DEPARTMENT OF
TRANSPORTATION & PUBLIC FACILITIES



New Subscriber

Subscription Type

Primary Email Address

You must enter a primary email address. You will use this to access and update your subscriptions or modify your subscriber preferences.

Email Address *

Confirm Email Address *

Email Delivery Preference

If you would like to change how subscription updates are delivered to you, select an option below.

- Send updates immediately by email
- Send updates daily by email
- Send updates weekly by email

Certain high priority updates may be sent regardless of your delivery preferences.

Optional Password

Enter an optional password to add password protection to your subscriber preferences.

Password

Confirm Password

Your contact information is used to deliver requested updates or to access your subscriber preferences.



NOTIFICATION

ALASKA DEPARTMENT OF TRANSPORTATION & PUBLIC FACILITIES



Welcome jess.mccarron@gmail.com

Quick Subscribe for jess.mccarron@gmail.com

Alaska Department of Transportation & Public Facilities offers updates on the topics below. Subscribe by checking the boxes; unsubscribe by unchecking the boxes.

Access your [subscriber preferences](#) to update your subscriptions or modify your password or email address without adding subscriptions.

Subscription Topics

Press Box

- Press Releases, Media Advisories and News Alerts

Airports

- Airport News
- Fairbanks International Airport
- Ted Stevens Anchorage International Airport

Alaska DOT&PF Transit

- Community Transit Grant Programs
- Community Transit Program
- Community Transit Program Calendar of Events
- Governor's Coordinated Transportation Task Force (CTTF)

Division of Measurement Standards and Commercial Vehicle Enforcement

- Commercial Vehicle Weight Restrictions
- Measurement Standards & Commercial Vehicle Enforcement Alerts

Doing Business with DOT&PF

- Transportation Economic Stimulus Projects

Ferries

- Alaska Marine Highway Specials
- Alaska Marine Highway System - Ferries
- Alaska Marine Highway System - Schedule Changes
- Alaska Marine Highway System - Marine Transportation Advisory Board

Highways

- Highway Safety Office
- Highway Data**
- Transportation Data Services - Motor Vehicle Traffic Crash Statistics

Railway

- Alaska Railroad Press Releases

Safety

- Highway Safety Grant Information
- Highway Safety Statistics & Publications
- Safe Routes to School Grant Program

Statewide Transportation Improvement Program

- Economic Stimulus
- Statewide Transportation Improvement Program (STIP) and Needs List

Travel Information

- Anton Anderson Memorial Tunnel - Schedules and Hours of Operation